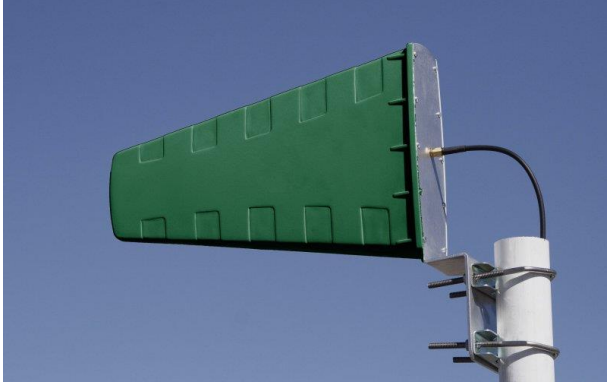


Wideband Directional Antenna

800 – 2500 MHz

Product Code: LPDA-A0075



SPECIFICATIONS:

Electrical:	
Frequency range	800 – 2500 MHz
VSWR	< 2.5:1
Feed power handling	10 W
Nominal input impedance	50 Ω
Connector	SMA (female)
Gain (typical)	7 dBi
E-plane 3 dB beamwidth	60°
H-plane 3 dB beamwidth	70°
Polarisation	Linear (vertical or horizontal)
Mechanical:	
Dimensions (l x w x d)	380 mm x 320 mm x 90 mm
Weight	800 g excluding bracket
Material	ABS and aluminium
Mounting method	Pole or wall-mount
Environmental: designed to meet the following specifications	
Wind survival	160 km/h
Temperature operational	-20 °C to +70 °C
Shock	40 G at 10 msec
Water ingress rating	IP65 (NEMA 4X)

PRODUCT FEATURES:

- Wideband
- Low and stable VSWR
- Vertical or horizontal polarisation
- Covers various international cellular bands
- Compact and suitable for indoor and outdoor applications

PRODUCT DESCRIPTION:

The LPDA-A0075 medium gain wideband directional antenna covers the GSM900, GSM1800 / UMTS and WLAN2400 bands. Its configuration is suitable for various cellular communication systems as well as the 2.4 GHz ISM band.

The antenna can be operated down to 760 MHz with small deviation from specifications.

Wideband Directional Antenna

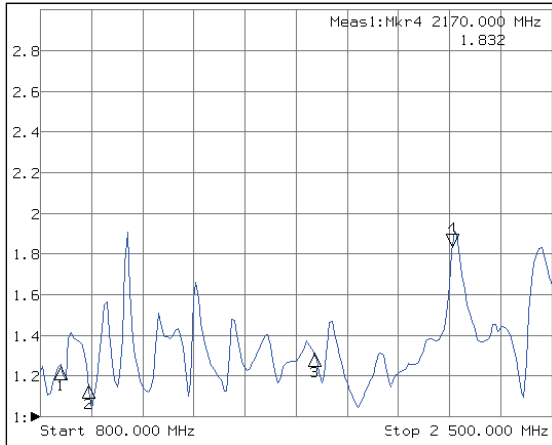
800 – 2500 MHz

Product Code: LPDA-A0075

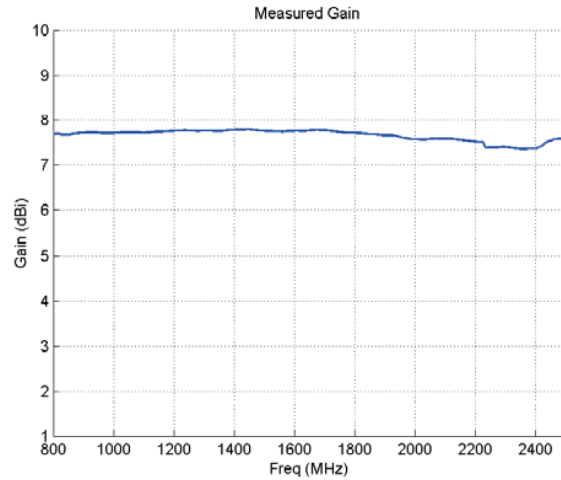
VERSION: 2.3

VSWR AND GAIN GRAPHS:

Typical VSWR:

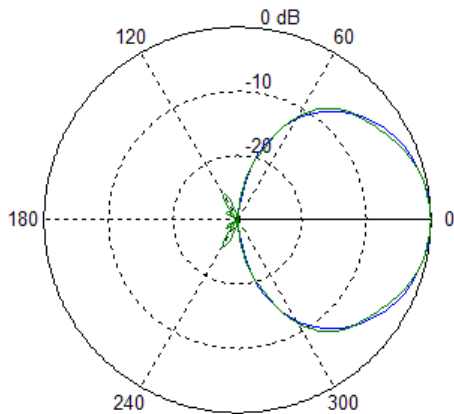


Gain:

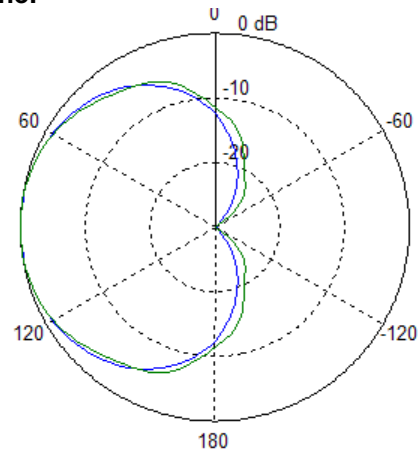


Radiation patterns:

E-plane:



H-plane:



— f=800
— f=2000